

Tooma Dam Notification Area

614000

615000

616000

6011000

6011000

6010000

6010000

6009000

6009000

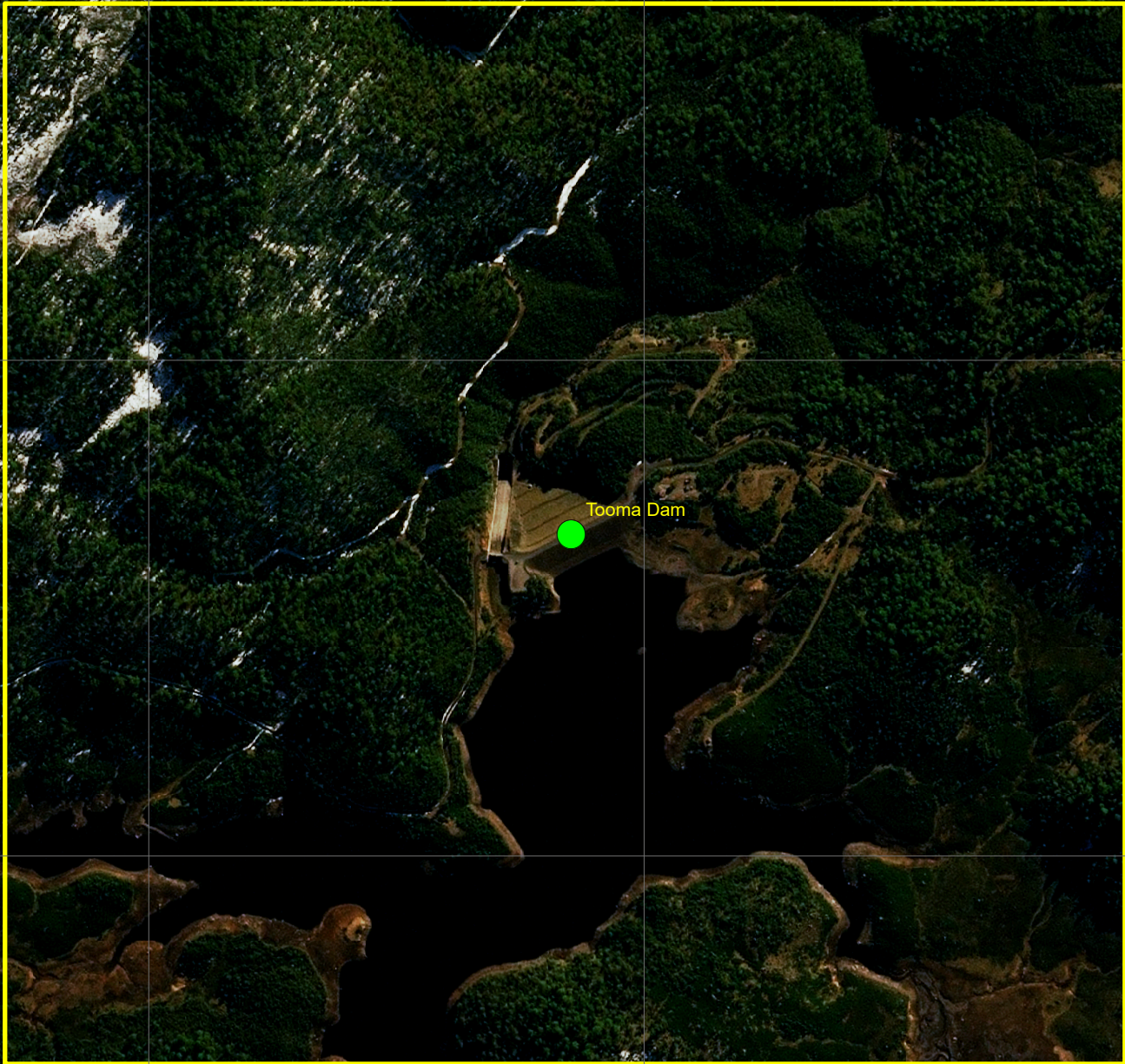
6008000

6008000

614000

615000

616000



Tooma Dam



0 0.325 0.65 1.3 km

Datum : GDA 94
Grid : MGA Zone 55

Plan No: 438
NA Label: Tooma Dam
Dam Name(s): Tooma Dam

25/11/2021

Notification areas defined under section 48 of the Dams Safety Act 2015

Tooma Dam Notification Area

The amended Tooma Dam Notification Area is the area bounded by straight lines joining the following 4 ordered points on map Khancoban 8525-I & IV. The ordered points are specified by Map Grid of Australia 1994 co-ordinates in Zone 55.

Point	MGAEast	MGANorth
1	613710	6008580
2	613710	6010720
3	615970	6010720
4	615970	6008580

The NSW Government Gazette No 643 of 17 December 2021